

## FlexiView 3

### Retention and Achievement software for Further Education in England.

- Uses the LSC's pseudocode, and supports the Inspectors' cohort structure
- Is so powerful and flexible in its analysis potential that it would be hard to devise any reporting or analysing requirement which it could not meet
- Is designed to be accommodating to non-technical users so that they can do their own investigations and produce their own analysis
- Links to Microsoft Excel, and provides other exports
- Contains a Tabulator/Layout Tool which will enhance complex analyses
- Gives drill-down to cohort or student level providing support material for checking
- Comes at a fraction of the cost of the market leaders with no sacrifice of functionality
- Is economic to deploy – one fee covers the whole college

Example output:

### Cross Tabulation

Area of Learning	Long-Short	L/S Level	Completion Year	2000-01	2001-02	2002-03	
Business administration, Manag	Long	Higher Level	Total: Net Enrolments	63	135	111	
			Mean: Success	22.2	28.9	38.7	
		Level 1	Total: Net Enrolments	249	245	220	
			Mean: Success	39	30.6	37.7	
		Level 2	Total: Net Enrolments	384	290	302	
			Mean: Success	39.8	31	50	
		Level 3	Total: Net Enrolments	338	371	277	
			Mean: Success	34.4	33.2	40.8	
		Level Unknown	Total: Net Enrolments	138	23	17	
			Mean: Success	36.2	47.0	70.6	
		Short	All Short	Total: Net Enrolments	443	343	187
				Mean: Success	26.6	51.4	60.4
	Construction	Long	Level 1	Total: Net Enrolments	39	76	81
				Mean: Success	41	27.6	17.3
Level 2			Total: Net Enrolments	38	62	51	
			Mean: Success	47.4	35.5	15.7	
Level 3			Total: Net Enrolments	92	66	70	
			Mean: Success	67.4	66.7	52.9	
Short		All Short	Total: Net Enrolments	4	4	24	
			Mean: Success	0	0	62.1	
Engineering, Technology and Ma		Long	Level 1	Total: Net Enrolments	20	04	107
				Mean: Success	65.2	36.9	15.9
	Level 2		Total: Net Enrolments	77	67	91	
			Mean: Success	51.5	16.4	36.3	
	Level 3		Total: Net Enrolments	21	35	80	
			Mean: Success	4.5	8.6	5	
	Level Unknown		Total: Net Enrolments	10	24	2	

## On-screen Display

Ethnicity	Expected End Year	Net Enrolments	Completion	AchievementCompleters	Success
Asian - Bangladeshi	2002-03	5	80	100	80
Asian - Bangladeshi	2003-04	11	36.4	50	18.2
Asian - Indian	2002-03	32	62.5	95	59.4
Asian - Indian	2003-04	37	48.6	50	24.3
Asian - Other	2002-03	26	61.5	68.8	42.3
Asian - Other	2003-04	51	70.6	36.1	25.5
Asian - Pakistani	2002-03	6	33.3	50	16.7
Asian - Pakistani	2003-04	6	16.7	0	0
Black - African	2002-03	41	36.6	93.3	34.1
Black - African	2003-04	19	68.4	30.8	21.1
Black - Caribbean	2002-03	25	56	78.6	44
Black - Caribbean	2003-04	44	56.8	24	13.6
Black - Other	2002-03	13	0	0	0

## Microsoft Excel

Microsoft Excel - ADSViewer.xls

File Edit View Insert Format Tools Data Window Help

A1 Ethnicity

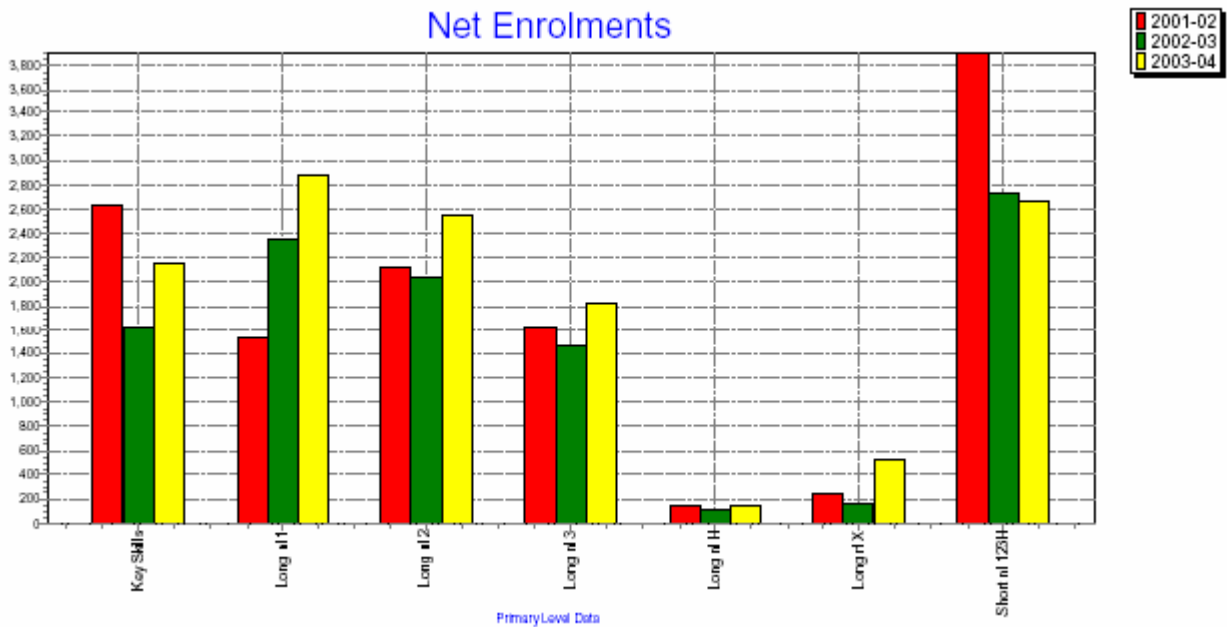
	A	B	C	D	E
1	Ethnicity	Expected End Year	Net Enrolments	Completion	AchievementCompleters S
2	Asian - Bangladeshi	2002-03	5	80	100
3	Asian - Bangladeshi	2003-04	11	36.4	50
4	Asian - Indian	2002-03	32	62.5	95
5	Asian - Indian	2003-04	37	48.6	50
6	Asian - Other	2002-03	26	61.5	68.8
7	Asian - Other	2003-04	51	70.6	36.1
8	Asian - Pakistani	2002-03	6	33.3	50
9	Asian - Pakistani	2003-04	6	16.7	0
10	Black - African	2002-03	41	36.6	93.3
11	Black - African	2003-04	19	68.4	30.8

## Standard Printout

Expected End Year is in: '2001-02', '2002-03', '2003-04'

Expected	Primary Level	Net Enro	Comple	Achievement	Succ
2001-02	Key Skills	2,629	71	35.8	25.4
	Long nl 1	1,529	68.8	47.4	32.6
	Long nl 2	2,117	70.5	60.3	42.5
	Long nl 3	1,603	73.5	60	44.1
	Long nl H	135	66.7	43.3	28.9
	Long nl X	248	70.6	62.9	44.4
	Short nl 123H	3,909	91.8	84.3	77.4
2002-03	Key Skills	1,602	37.6	84.4	31.7
	Long nl 1	2,348	45	76.6	34.5
	Long nl 2	2,037	50.7	83.3	42.2
	Long nl 3	1,467	53.6	82.6	44.3
	Long nl H	114	48.2	78.2	37.7
	Long nl X	167	35.3	64.4	22.8
	Short nl 123H	2,732	86.2	92.9	80.1
2003-04	Key Skills	2,153	50.9	31.1	15.8
	Long nl 1	2,883	60.9	39.2	23.9
	Long nl 2	2,554	66	45	29.7
	Long nl 3	1,823	72.7	41.2	30
	Long nl H	134	70.9	27.4	19.4
	Long nl X	529	76.9	17.4	13.4
	Short nl 123H	2,658	90	49.1	44.2

## Chart



A trial version can be downloaded from: <http://www.meltonisl.com/flexiview.html>  
 A release code will be required, obtainable from [info@meltonisl.com](mailto:info@meltonisl.com). Email your college name and both FEFC and LSC codes. A license file covering one month's use will be returned within 48 hours.